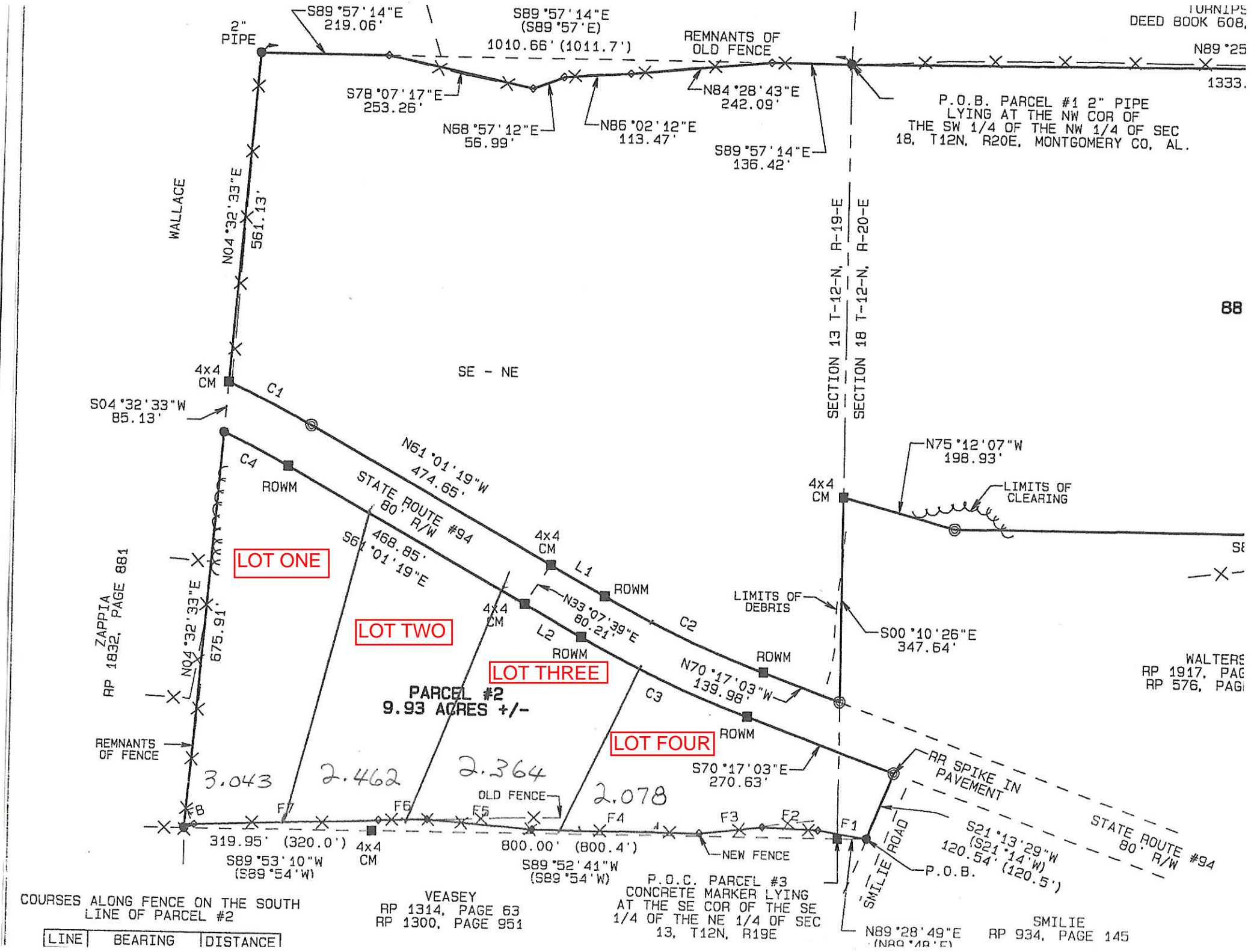


P.O.B. PARCEL #1 2" PIPE LYING AT THE NW COR OF THE SW 1/4 OF THE NW 1/4 OF SEC 18, T12N, R20E, MONTGOMERY CO, AL.



LOT ONE

LOT TWO

LOT THREE

LOT FOUR

PARCEL #2
9.93 ACRES +/-

P.O.C. PARCEL #3
CONCRETE MARKER LYING
AT THE SE COR OF THE SE
1/4 OF THE NE 1/4 OF SEC
13, T12N, R19E

COURSES ALONG FENCE ON THE SOUTH
LINE OF PARCEL #2

LINE	BEARING	DISTANCE
------	---------	----------

VEASEY
RP 1314, PAGE 63
RP 1300, PAGE 951

SMILIE
RP 934, PAGE 145

WALTERS
RP 1917, PAGE
RP 576, PAGE

S89°57'14"E 219.06'

S89°57'14"E (S89°57'E) 1010.66' (1011.7')

S78°07'17"E 253.26'

N68°57'12"E 56.99'

N86°02'12"E 113.47'

N84°28'43"E 242.09'

S89°57'14"E 136.42'

N04°32'33"E 561.13'

S04°32'33"W 85.13'

N61°01'19"W 474.65'

N75°12'07"W 198.93'

N70°17'03"W 139.98'

S00°10'26"E 347.64'

S70°17'03"E 270.63'

S21°13'29"W (S21°14'W) 120.54' (120.5')

S21°14'W 120.54'

S89°53'10"W (S89°54'W) 319.95' (320.0')

S89°52'41"W (S89°54'W) 800.00' (800.4')

N89°28'49"E (N89°28'E)

N04°32'33"E 675.91'

N33°07'39"E 80.21'

N70°17'03"W 139.98'

N89°28'49"E (N89°28'E)

N75°12'07"W 198.93'

N33°07'39"E 80.21'

N70°17'03"W 139.98'

S70°17'03"E 270.63'

S21°13'29"W (S21°14'W) 120.54' (120.5')

S21°14'W 120.54'

S89°53'10"W (S89°54'W) 319.95' (320.0')

S89°52'41"W (S89°54'W) 800.00' (800.4')

N89°28'49"E (N89°28'E)

3.043

2.462

2.364

2.078

319.95' (320.0')

800.00' (800.4')

N89°28'49"E (N89°28'E)